

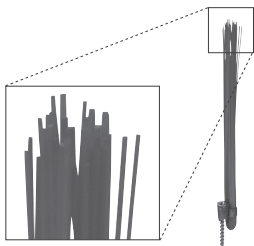


834-6DIR

Finish Line™

Adjustable Cleanout
6" Ductile Iron No-Hub Connection

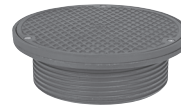
- Adjustable AFTER the pour
- Ductile iron base adapter with 6" polypro cleanout plug, ductile iron coring sleeve, head adapter and poly coring plug
- Medium-duty nickel bronze and stainless steel covers
- Ductile iron cover for use in heavy-duty applications



832-W
Locating bristles



Rough-in Cleanout
Base adapter, coring sleeve and coring plug



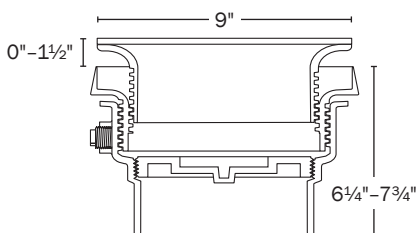
Finish Fixture
Head adapter, ring and cover



Complete Assembly
Includes rough-in cleanout and boxed finish fixture

Options: Add letter suffix. Add price to list.

- V** Vandal-resistant screws \$5.00
- B** Brass plug in place of polypro \$30.00



Item No	Description	Pkg	Min Qty	Case Qty
ROUGH-IN CLEANOUT				
834-6DF	6" no-hub cleanout rough-in fixture	B*	1	1
FINISH FIXTURE				
834-6DHir	Ductile iron head adapter with ductile iron ring & cover	B*	1	1
NEW 834-6DHNR	Ductile iron head adapter with nickel bronze ring & cover	B*	1	1
NEW 834-6DHSR	Ductile iron head adapter with 304 stainless ring & cover	B*	1	1
COMPLETE ASSEMBLY				
834-6Dir	6" no-hub cleanout with ductile iron cover	B*	1	1
NEW 834-6DNR	6" no-hub cleanout with nickel bronze ring & cover	B*	1	1
NEW 834-6DSR	6" no-hub cleanout with 304 stainless ring & cover	B*	1	1
ACCESSORIES				
832-W	Flexible red locating bristles with screw	B*	1	10